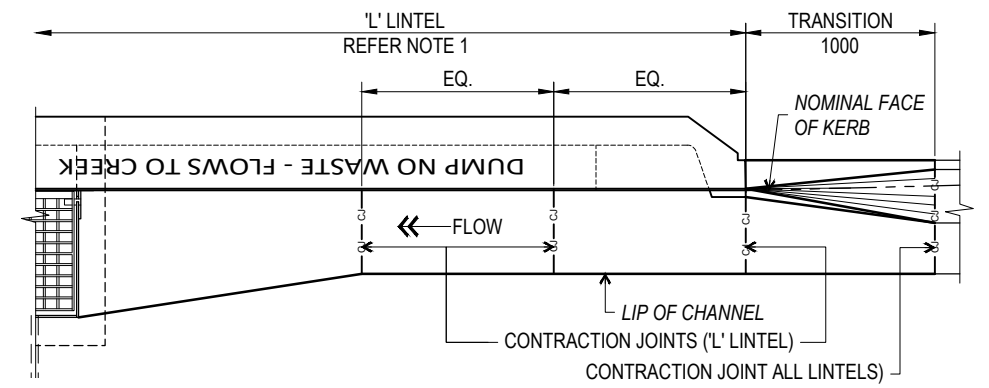
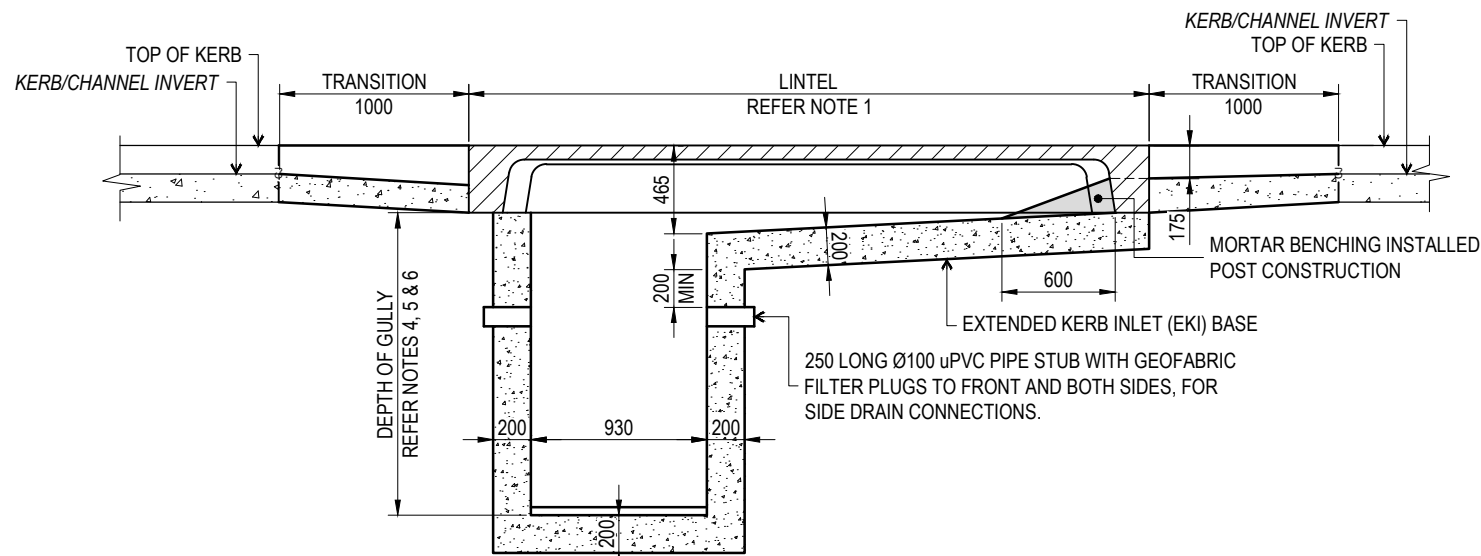


TYPICAL INLET ON GRADE - PLAN
'S' AND 'M' LINTELS

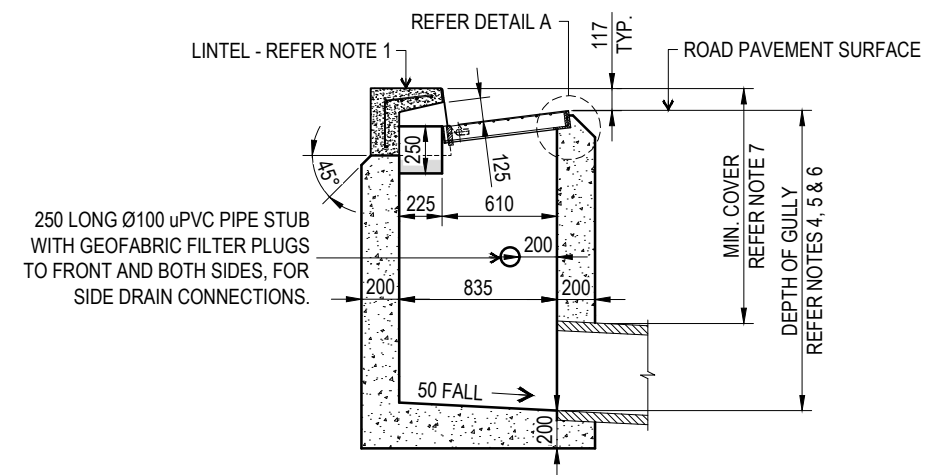
NOTE: FOR SAG GULLY, APRON TO EXTEND TO END OF LINTEL AND GULLY TO BE LOCATED IN CENTRE OF LINTEL.



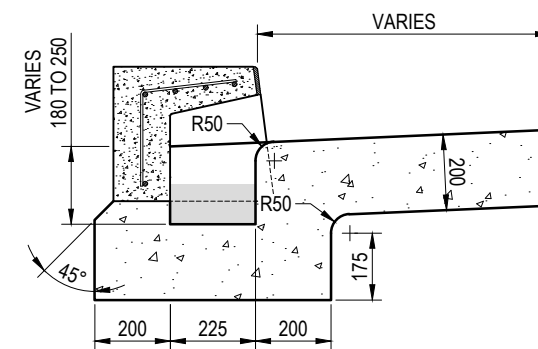
TYPICAL INLET ON GRADE - PLAN
'L' LINTEL



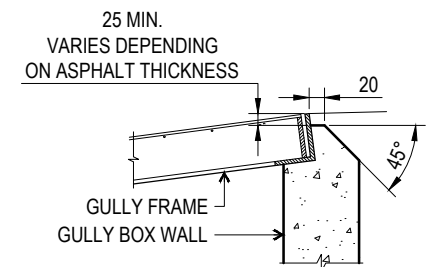
TYPICAL INLET ON GRADE
SECTION A-A



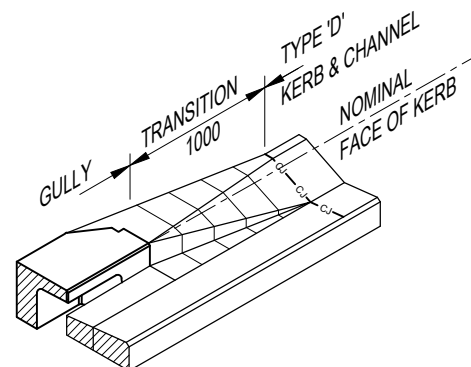
SECTION B-B



SECTION C-C



DETAIL A



TRANSITION TO
KERB & CHANNEL
 (TYPE 'D' KERB & CHANNEL SHOWN)

NOTES:

1. REFER BSD-8055 FOR LINTEL DETAILS.
2. CAST INSITU CONCRETE N32 TO AS1379 AND AS3600.
3. REFER BSD-8053 & BSD-8054 FOR GULLY GRATE AND FRAME DETAILS.
4. LIMIT DEPTH OF STANDARD GULLY TO 1.80m.
5. STANDARD GULLIES BETWEEN 1.8 AND 3.0m ARE PERMITTED ONLY WITH THE PRIOR APPROVAL OF COUNCIL.
6. GULLIES DEEPER THAN 3.0m TO BE INDIVIDUALLY DESIGNED UNDER THE DIRECTION OF A SUITABLY QUALIFIED REGISTERED PROFESSIONAL ENGINEER OF QUEENSLAND (RPEQ).
7. INSTALL STEP IRONS TO GULLIES GREATER THAN 1.20m DEEP IN ACCORDANCE WITH AS1657.
8. REFER TO BSD-2042 (ROADWAYS) AND BSD-2043 (PATHS AND VERGES) FOR MINIMUM COVER REQUIREMENTS. MIN. 450mm IN OTHER AREAS.
9. DIMENSIONS IN MILLIMETRES (U.N.O.).

THE PURPOSE OF THIS STANDARD DRAWING IS TO PROVIDE TYPICAL DETAILS THAT SUPPORT THE DESIRED OUTCOMES OF THE BRISBANE CITY PLAN 2014 AND ASSOCIATED PLANNING SCHEME POLICIES. THE FITNESS FOR PURPOSE OF THIS STANDARD DRAWING FOR A SPECIFIC PROJECT SHOULD BE ASSESSED AND ACCEPTED BY AN APPROPRIATELY QUALIFIED DESIGNER AND/OR REGISTERED PROFESSIONAL ENGINEER OF QUEENSLAND (RPEQ).



BRISBANE CITY COUNCIL STANDARD DRAWING

TYPE 'A'
GULLY
KERB IN LINE

PUBLISH DATE		SEP 2024
SCALE		NOT TO SCALE
DRAWING NUMBER		BSD-8052
ORIGINAL SIZE	REVISION	
A3	E	